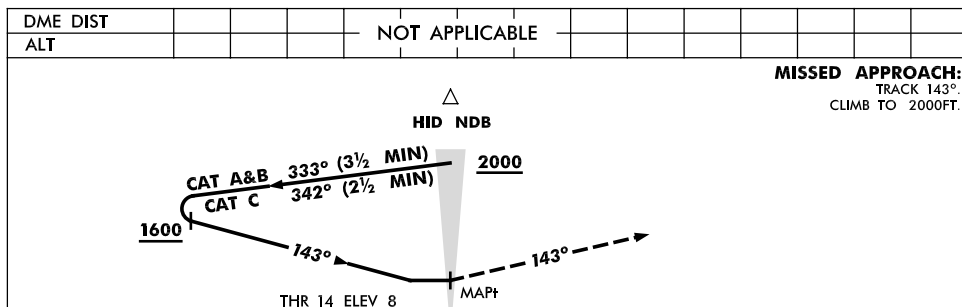
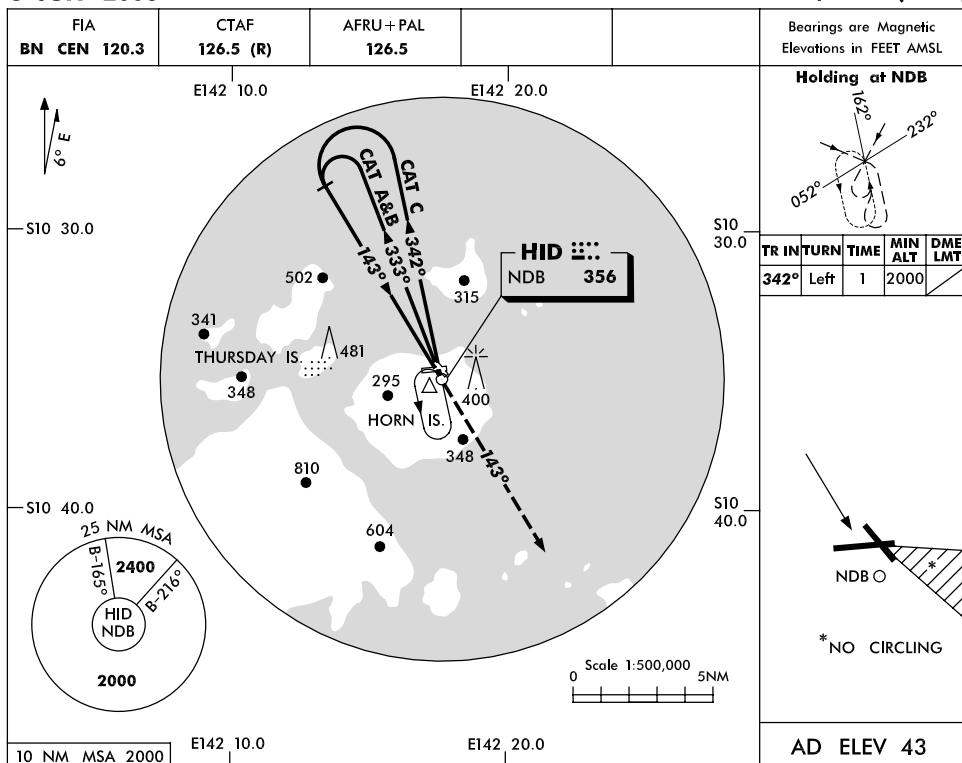


USE QNH

RWY 14 NDB
HORN ISLAND, QLD (YHID)

8 JUN 2006



CATEGORY	A	B	C	D
S-I NDB	910 (902-5.0)			NOT APPLICABLE
CIRCLING *	910 (867-2.4)		980 (937-4.0)	
ALTERNATE	(1367-4.4)		(1437-6.0)	

- NOTES**
- MAX IAS :
HOLDING: 210KT.
INITIAL :
CAT A&B 140KT.
CAT C 210KT.
 - NO CIRCLING IN SECTOR SOUTH OF RWY 26 & EAST OF RWY 32.
 - LANDING NOT PERMITTED RWY 32.

Changes: Editorial.

HIDNB02-107