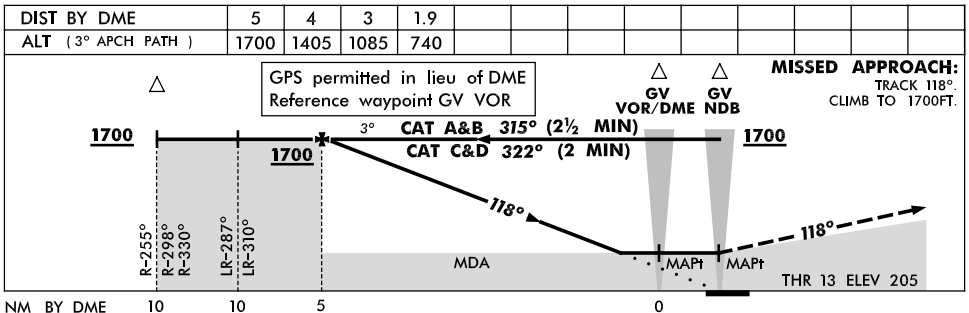
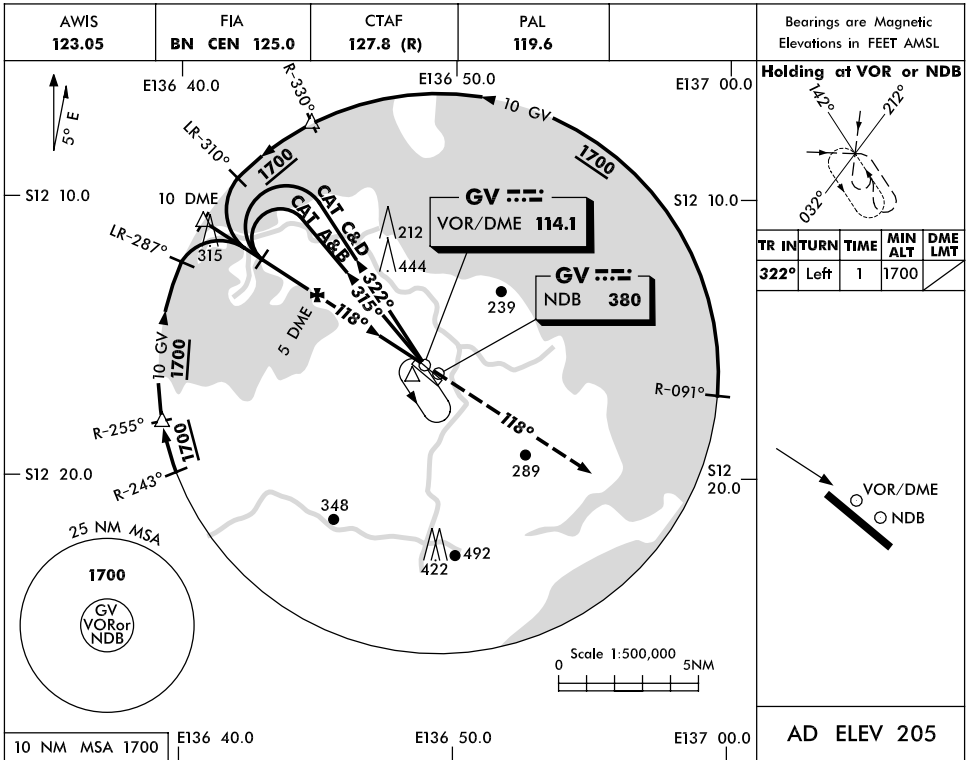


USE QNH

RWY 13 NDB or VOR
GOVE, NT (YPGV)

23 NOV 2006



NOTES

CATEGORY	A	B	C	D
S-I VORorNDB	780 (575-3.2)			
S-I WITH DME	740 (535-3.0)			
CIRCLING	840 (635-2.4)	940 (735-4.0)	1010 (805-5.0)	
ALTERNATE	(1135-4.4)	(1235-6.0)	(1305-7.0)	

1. MAX IAS:
INITIAL : 210KT.

Changes: AWIS FREQ.

PGVNB01-109