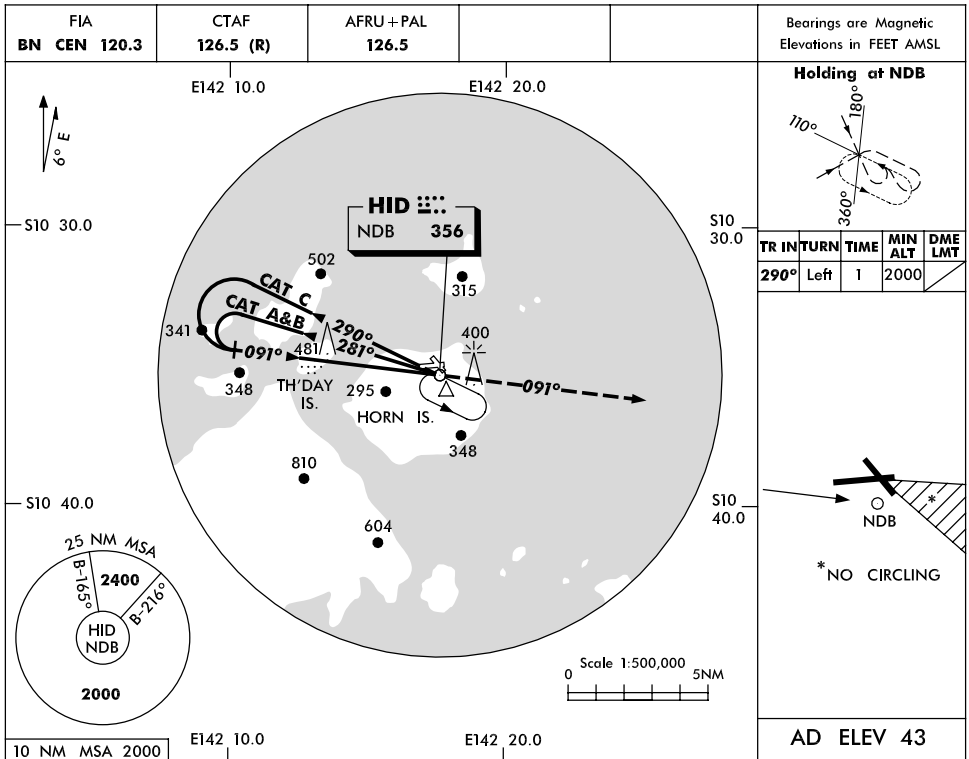


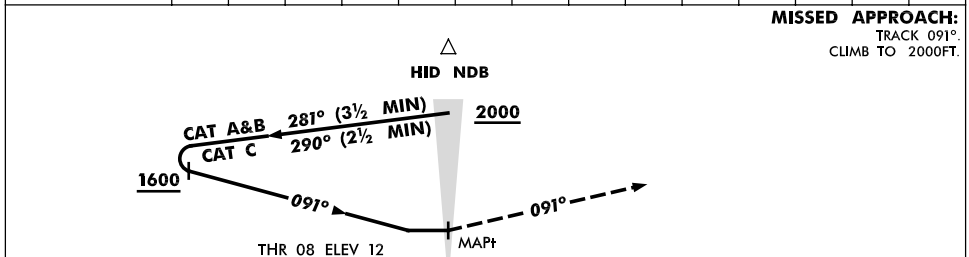
USE QNH

RWY 08 NDB
HORN ISLAND, QLD (YHID)

8 JUN 2006



| | | | | | | | | | | |
|----------|----------------|--|--|--|--|--|--|--|--|--|
| DME DIST | NOT APPLICABLE | | | | | | | | | |
| ALT | | | | | | | | | | |



| CATEGORY | A | B | C | D |
|------------|---------------|---------------|---|----------------|
| S-I NDB | 880 (868-4.9) | | | NOT APPLICABLE |
| CIRCLING * | 910 (867-2.4) | 980 (937-4.0) | | |
| ALTERNATE | (1367-4.4) | (1437-6.0) | | |

NOTES

- MAX IAS :
INITIAL :
CAT A&B 140KT.
CAT C 210KT.
HOLDING: 210KT.
- NO CIRCLING IN SECTOR SOUTH OF RWY 26 & EAST OF RWY 32.
- LANDING NOT PERMITTED RWY 32.

Changes: Editorial. HIDNB01-107