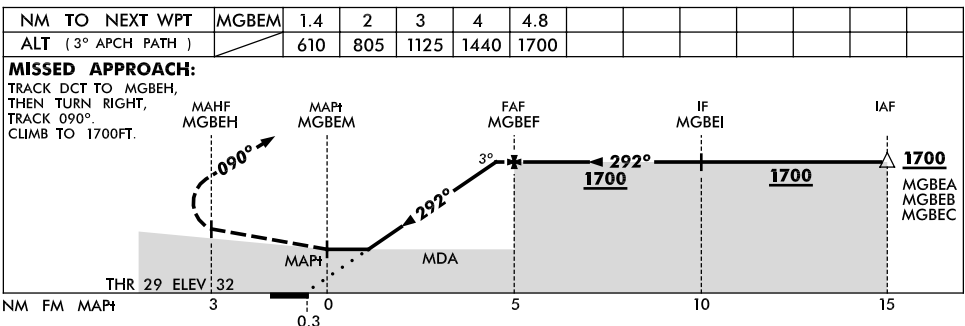
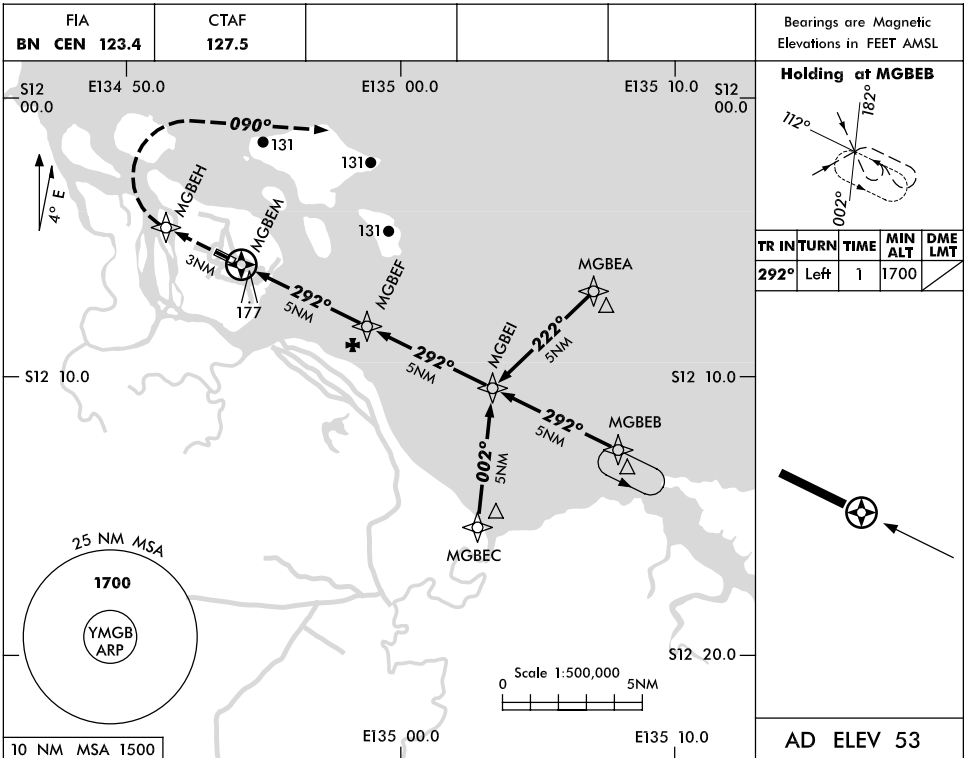


USE QNH

RWY 29 RNAV (GNSS)
MILINGIMBI, NT (YMGB)

16 MAR 2006



NOTES

CATEGORY	A	B	C	D
S-I GNSS	610 (578-3.2)			NOT APPLICABLE
CIRCLING	660 (607-2.4)		760 (707-4.0)	
ALTERNATE	(1107-4.4)		(1207-6.0)	

- MAX IAS:
INITIAL : 210KT.

Changes: CTAF, Editorial.

MGBGN02-106